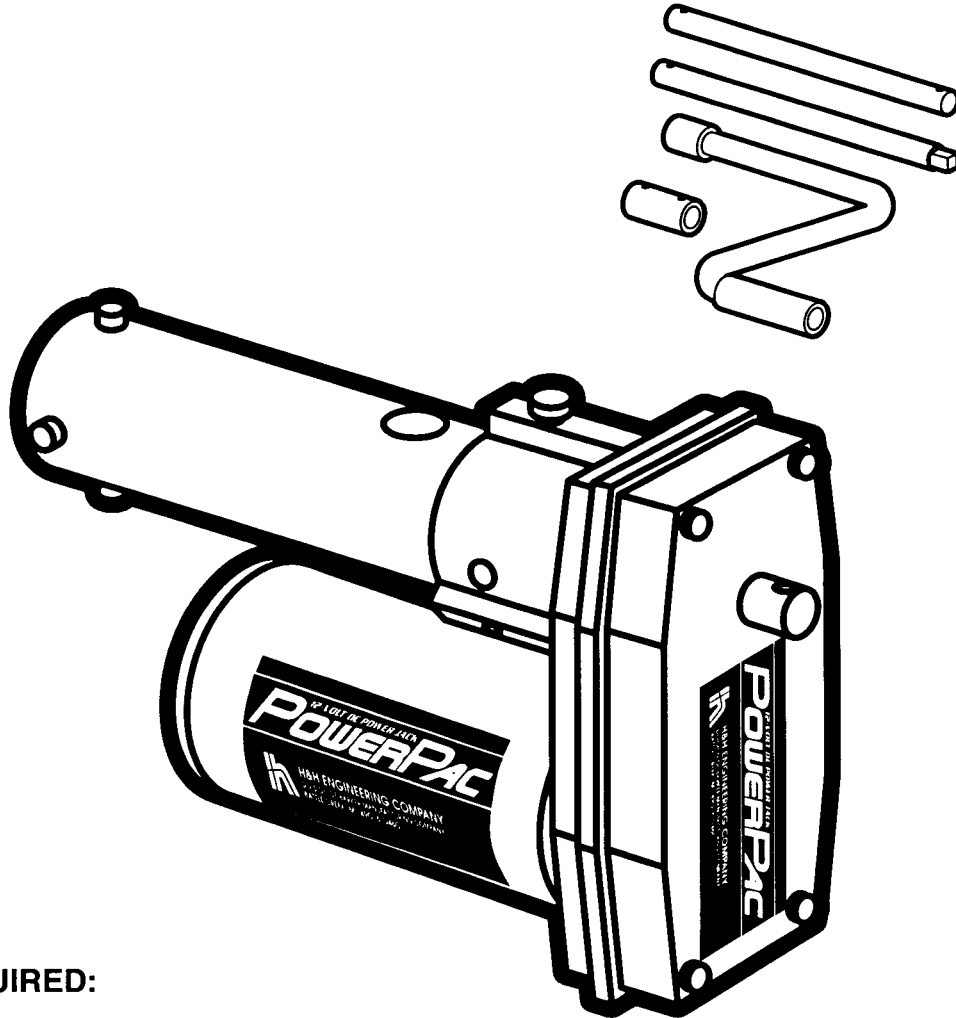


## OWNER'S MANUAL

# POWERPAC

## INSTALLATION & OPERATING INSTRUCTIONS



### TOOLS REQUIRED:

- Hex Key 1/8"
- Hammer
- Punch
- Wrench 9/16"



**H&H ENGINEERING COMPANY**

DIVISION OF BARKER MFG. CO.  
730 E. MICHIGAN AVE. • P.O. BOX 460 • BATTLE CREEK MI 49016-0460 • (616) 965-2371

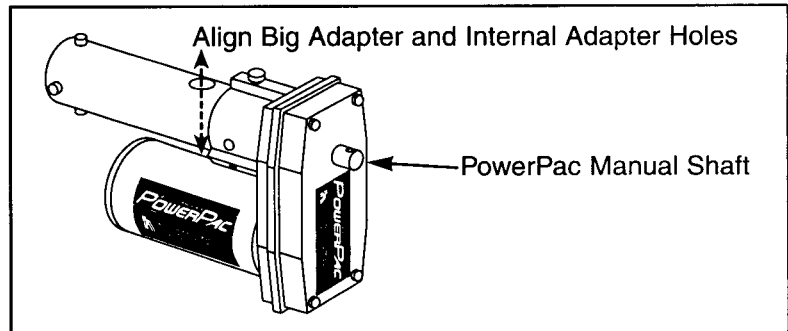
## ⚠ WARNING!

- Read and understand Installation Instructions
- Remove jewelry (watches, rings, etc.)
- Trailer must be in a parked and well supported position.

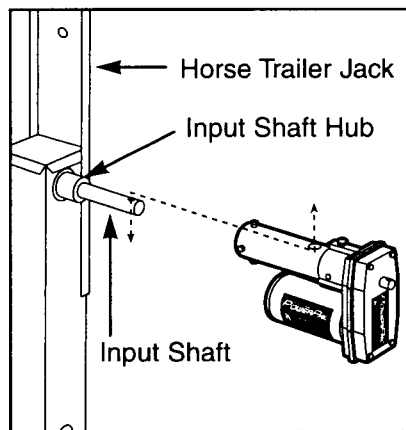
### INSTALLATION INSTRUCTIONS:

#### PowerPac Installation:

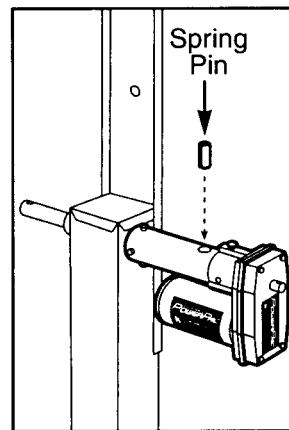
1. Before mounting the PowerPac, align the hole in the Big Adapter with the hole in the Internal Adapter. If necessary, rotate the PowerPac manual shaft to align the holes. Connect the Manual Crank Tube B Weldment to the PowerPac manual shaft using a 1/4 Clevis Pin. Use the Crank Handle Assembly to rotate PowerPac manual shaft until the holes align. Remove the Manual Crank Tube B Weldment and Crank Shaft Assembly.



2. Slide the PowerPac over the horse trailer jack input shaft and onto the input shaft hub.



3. Align the hole in the input shaft with the hole in the Big Adapter.



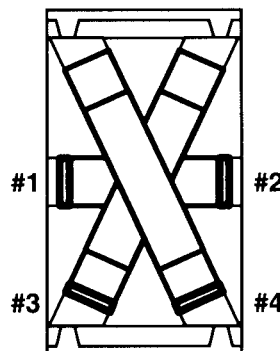
4. Use a hammer and punch to drive the Spring Pin into the aligned holes. Hammer the top of the Spring Pin flush with the top of the Internal Adapter.

5. Use the hex key to tighten the set screws and secure the Big adapter to the input shaft hub.

#### Electrical Wiring:

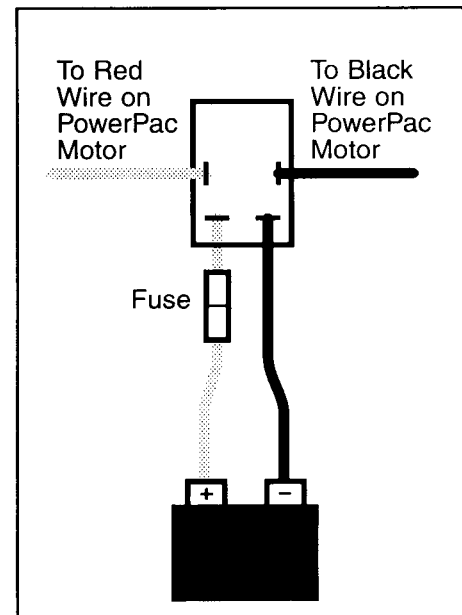
1. Disconnect the ground cable from the vehicle's negative battery post to prevent electrical shock/shorting.
2. Install the Toggle Switch at a desired location.
3. Refer to wiring diagram. Connect the red wire from the PowerPac to terminal #1 on the Toggle Switch.
4. Connect terminal #3 to a positive 12 volt source. Note: it is recommended to use a 20 amp slow-blow fuse (not supplied) in the red wire line.
5. Connect the black wire from the PowerPac to terminal #2 on the Toggle Switch.
6. Connect terminal #4 to an appropriate ground.
7. Reconnect the ground cable to the vehicle's negative battery post.

#### Toggle Switch Terminals



**NOTE: Recommend using a 20 amp slow-blow fuse (not supplied).**

#### Wiring Diagram



## Manual Crank Assembly:

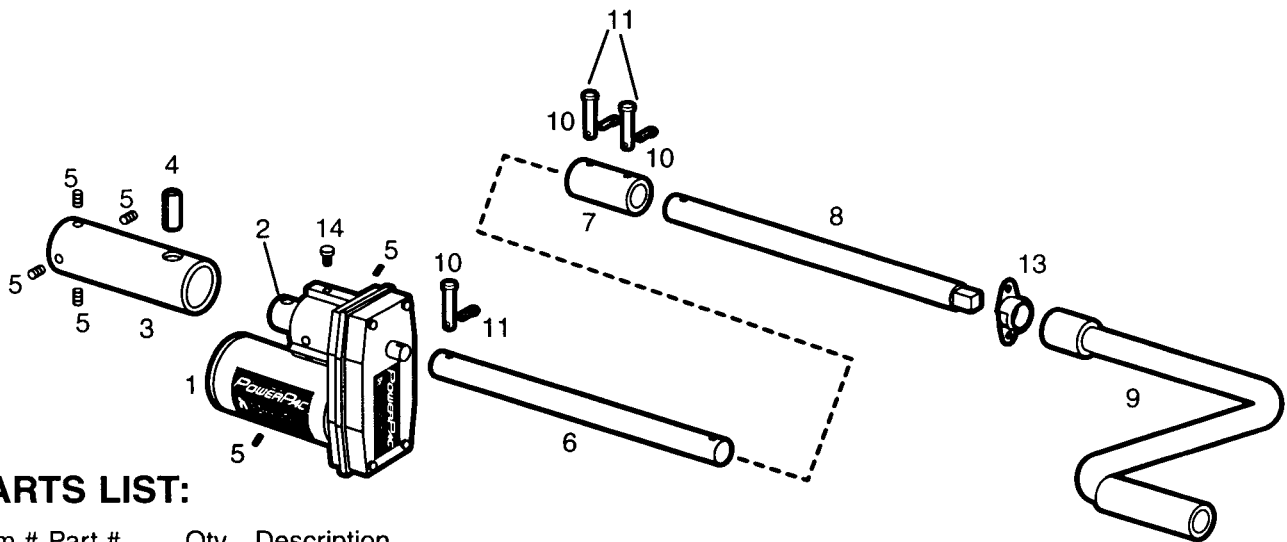
The PowerPac comes complete with an Manual Crank Assembly should it become necessary to crank the PowerPac manually. To install the Manual Crank Assembly:

1. Slide the Manual Crank Tube A Extension onto the PowerPac manual shaft.
2. Align the hole in the Manual Crank Tube A Extension with the hole PowerPac manual shaft and insert a 1/4 Clevis Pin.
3. Secure the Clevis Pin with a Cotter Pin.
4. Slide the Coupler over the end of the Manual Crank Tube A Extension secure it with a 1/4 Clevis Pin and Cotter Pin.
5. Insert the Manual Crank Tube B Weldment into the Coupler and secure it with a 1/4 Clevis Pin and Cotter Pin.
6. Place the Crank Handle onto the Manual Crank Tube B Weldment and begin cranking.

Note: it may be necessary to drill a hole through the side of the horse trailer to install Manual Crank Assembly. A Flange Bearing is provided to mount on the side of the horse trailer at the location of the drilled hole.

## OPERATING INSTRUCTIONS:

1. The Toggle Switch in its natural unengaged position, prevents the flow of current to the PowerPac. Pushing the toggle in either direction will cause the PowerPac to raise or lower the horse trailer jack. Briefly engage the toggle in both directions to determine which position of the toggle raises and lowers the horse trailer jack.
2. Refer to your horse trailer manual for proper raising and lowering of the horse trailer jack. Use the PowerPac to raise and lower the horse trailer accordingly.
3. Be sure to raise the horse trailer jack enough to allow for proper ground clearance during road travel.



## PARTS LIST:

Item #	Part #	Qty	Description
1	24380	1	Power Head
2	24327	1	Internal Adapter (preassembled)
3	24328	1	Big Adapter
4	624-0015	1	Spring Pin 3/8 x 1 1/2
5	608-6001	6	Set Screw 1/4-20 x 1/4
6	24506	1	Crank Tube A Extension
7	24508	1	Coupling
8	24507	1	Crank Tube B Weldment
9	24393	1	Crank Handle Assembly
10	643-0003	3	Clevis Pin 1/4
11	625-0000	3	Cotter Pin
12	736-2300	1	Toggle Switch
13	21263	1	Flange Bearing
14	605-0000	1	Bolt 3/8 x 1

